

Customer :

customer

Customer part :

customer part

Comment :

Comment

S1=4.82

S2=4.89

Tmax=442

Tp S2=481.0

PI=0.5

HI=108

Sample =1736.80

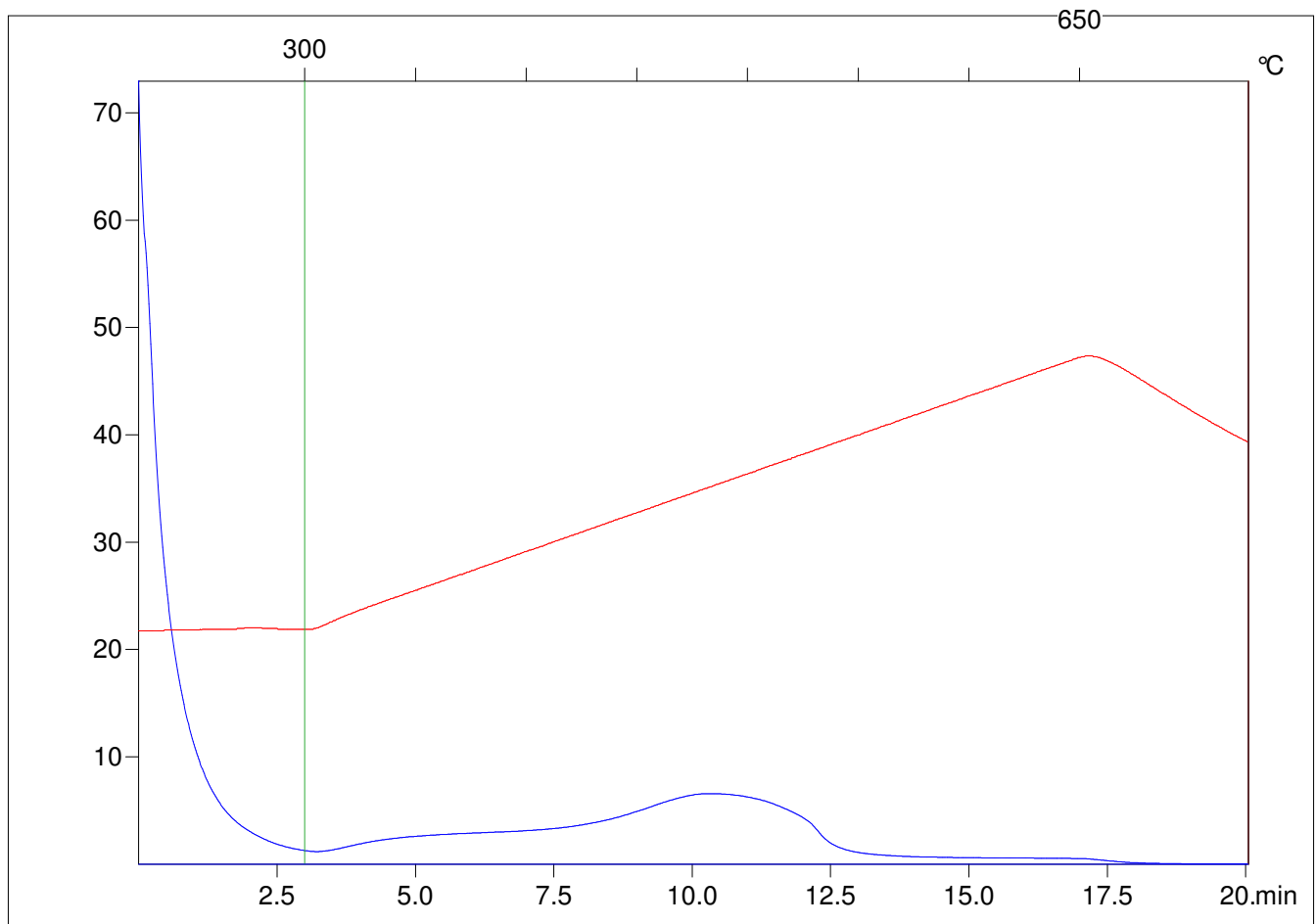
Method =Bulk Rock

Cycle=Basic

KFID(10*9)=1444

Qty =70.8

TOC=4.52



C:\VINC\PK2_1792\PK065.R00 : FID pyrolysis graphic

State

Pyro Status

Oxi Status